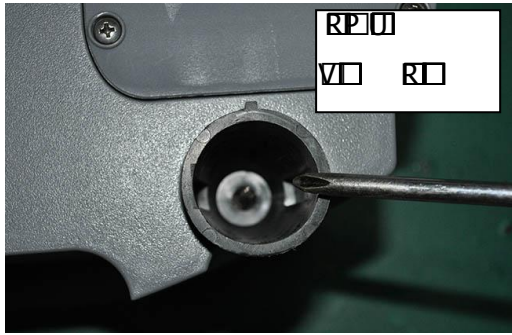
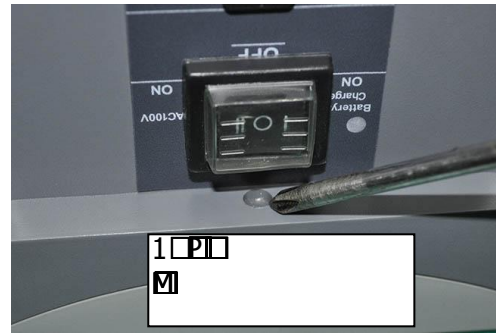


R P U R V R R I
 R U R R R M
 U U P R V R P I
 R P



R P U
 V R U



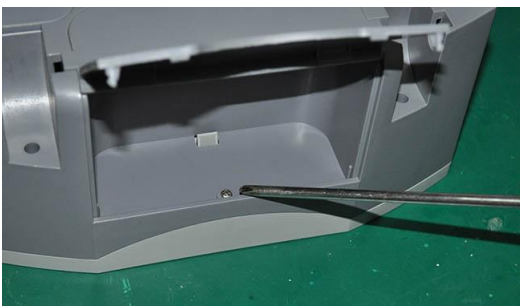
1 P I
 M



1 R P V R R I

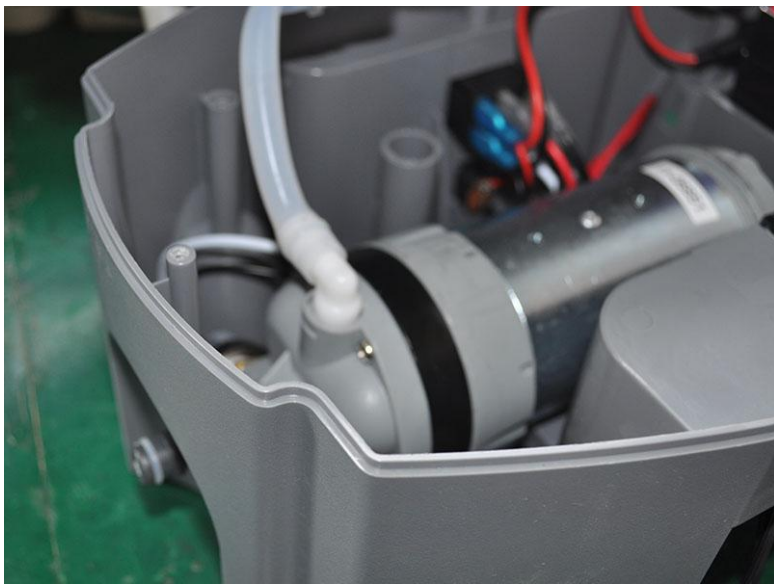


1 R P
 U M R R R I

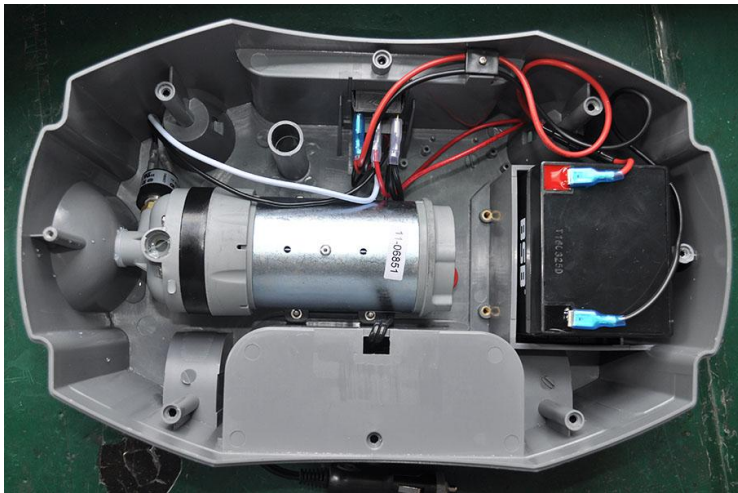


1 R P
 M

12V



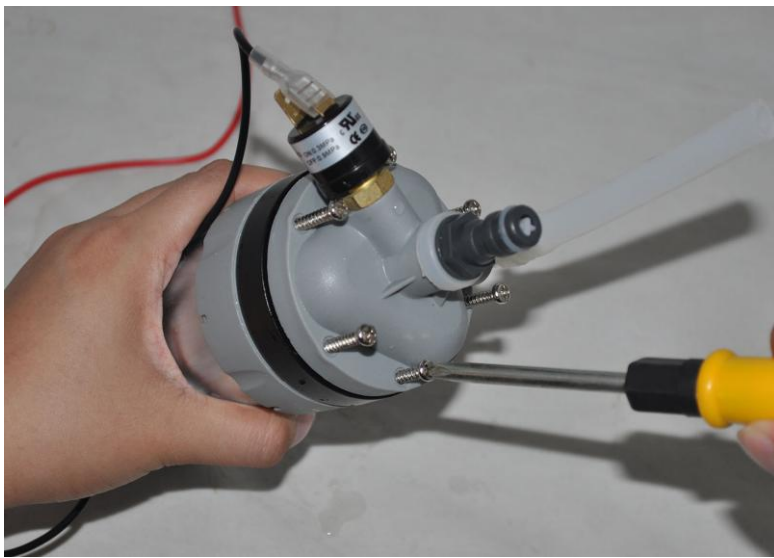
Nakon otvaranja gornjeg poklopca, odvrnite crevo koje je povezano sa pumpom



Odvrnite četiri šrafa na dnu da biste oslobodili pumpu iz kućišta



Da biste izvadili pumpu iz kućišta, odvojite žicu od prekidača pritiska



Odvijte poklopac pumpe, pogledajte zaptivač dijafragme u sredini



Zamenite zaptivač dijafragme i zatim vratite poklopac pumpe nazad na pumpu.